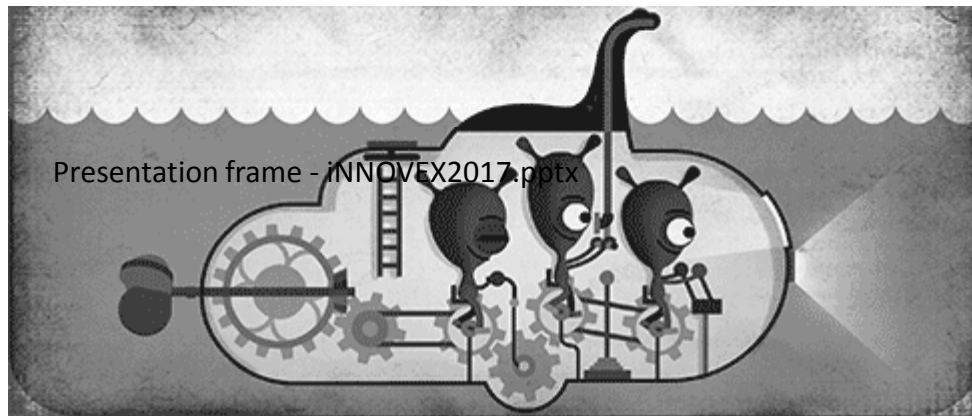


# "Autonomic vehicle for water pipes inspection from the inside"



Dr. Menashe Rajuan



# (Abbey) Road Map

- The need
- The market
- The vision
- The technology
- The net

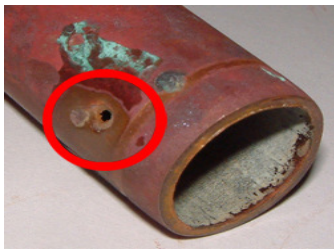




# The Need

**While you are reading this sentence, 5000 cubic meter of fresh water are lost due to leaks in water pipes!!!**

**The UN estimates water lost due to water pipes malfunctions by 12Bm<sup>3</sup>/y!!!**



**Water distribution networks – which are mostly underground - are the world's largest engineering infrastructures (100's millions km) that do not receive direct periodical examinations.**

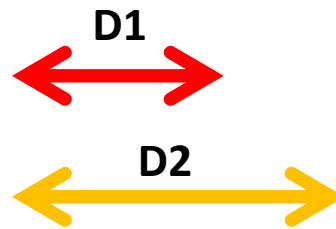
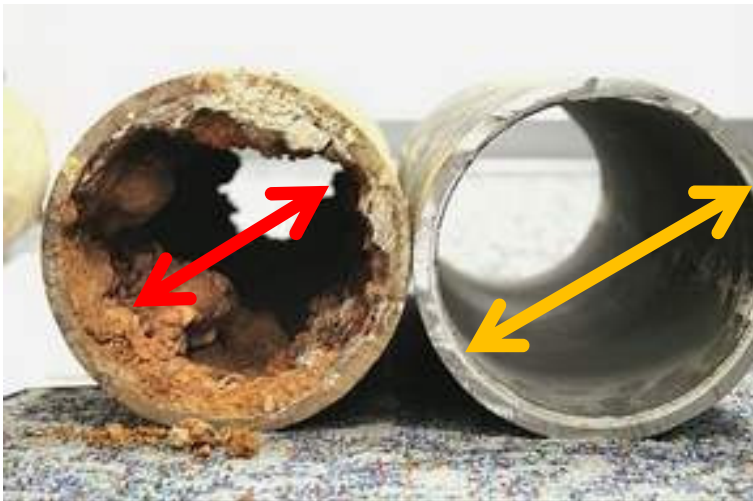
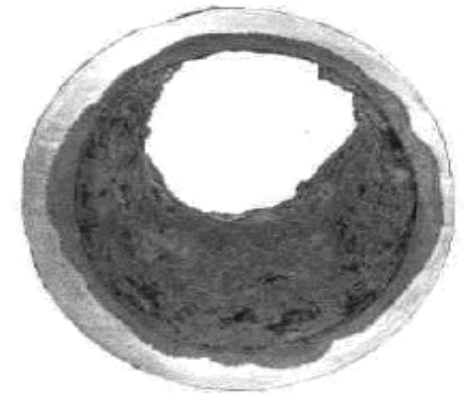
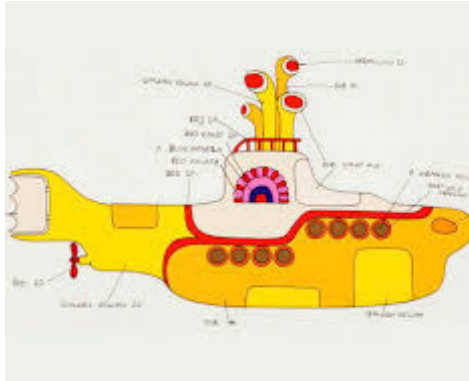


# The Need

- Leaks:
  - 3%-5% in new systems (in Israel 5% ~ 75Mm<sup>3</sup>/y ~ Ashkelon)
  - 10%-20% regular
  - up to 50% in very old systems (sometimes in well developed countries)
- Pirate connections
- Pipe's condition – regular vs. break maintenance
- Valves conditions (Energy)
- Malfunctions study (evolution)
- Regulations – pipes' renew every 40 years (2.5% /y), ~ 2M \$/km



# PIPES Malfunctions



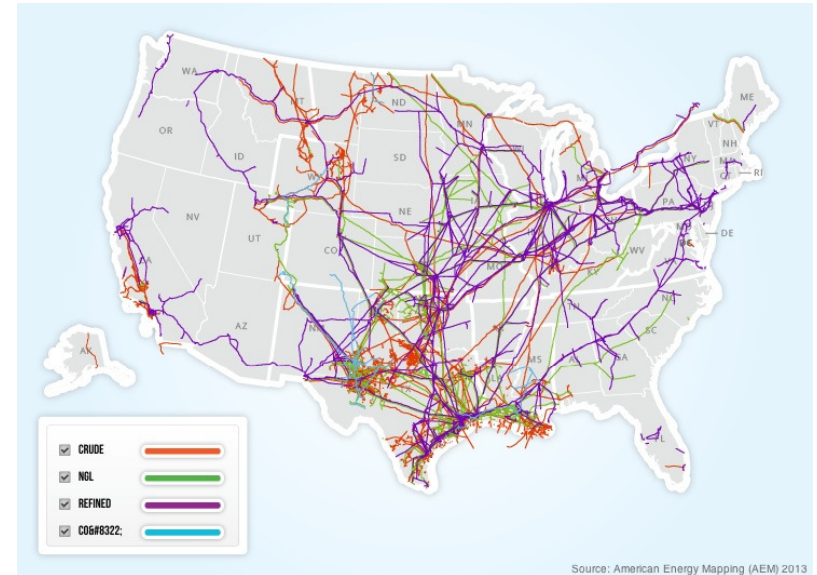
$$S1/S2 = \text{SQR } D1/D2$$





# The Market

- **Prices**
  - **Inspection: ~2500\$/km**
  - **Renew: ~2M\$/km**
- **The world**
  - Hundreds of million km around the world
  - US about 100 million km (→ **250\$ trillion**)
- **Israel (Beta site)**
  - Mekorot 11,000 km (10" and up → 250 km → 500 M\$) + 20 M\$ (Energy)
  - "Hagihon" (Jerusalem) – 300 km (8" – 16") → 7.5 km → 15 M\$ (infrastructure)
  - About 50 public companies (average 100km/company): Total 500 M\$





# The Vision

**A system continuously perform visual, audio, electro magnetic and ultrasonic inspection of fresh water pipes while in duty from the inside**

**to effectively and safely decrease water loses, detects pirate connections and prevents hazardous contaminates from developing inside the pipes**

**Operationally & cost effective, safe, saves water & energy resources**



# The Platform

The system consist of the following:

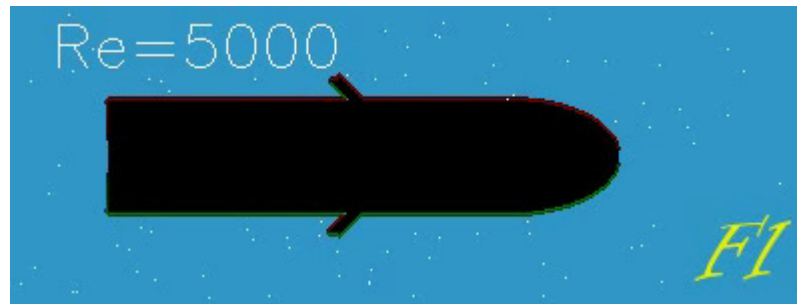
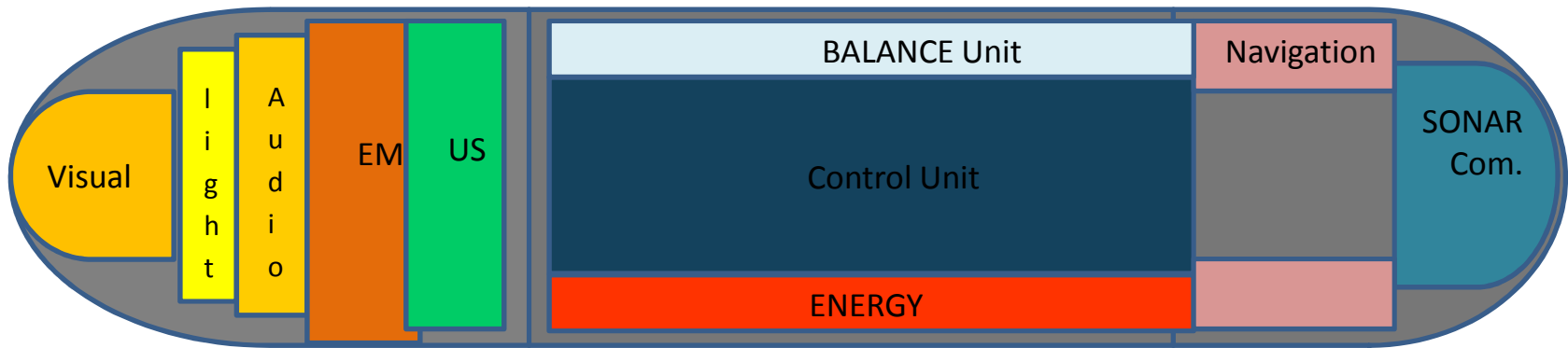
- An autonomic platform (the “Submarine”)
  - carrying a variety of sensors and data possessors,
  - capable of self navigation
  - a remote connection to the operation station
- Loading and un-loading systems
- Data Analysis system





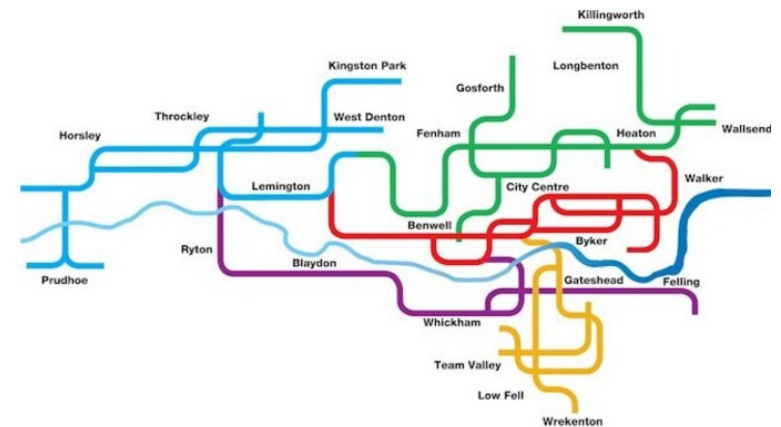
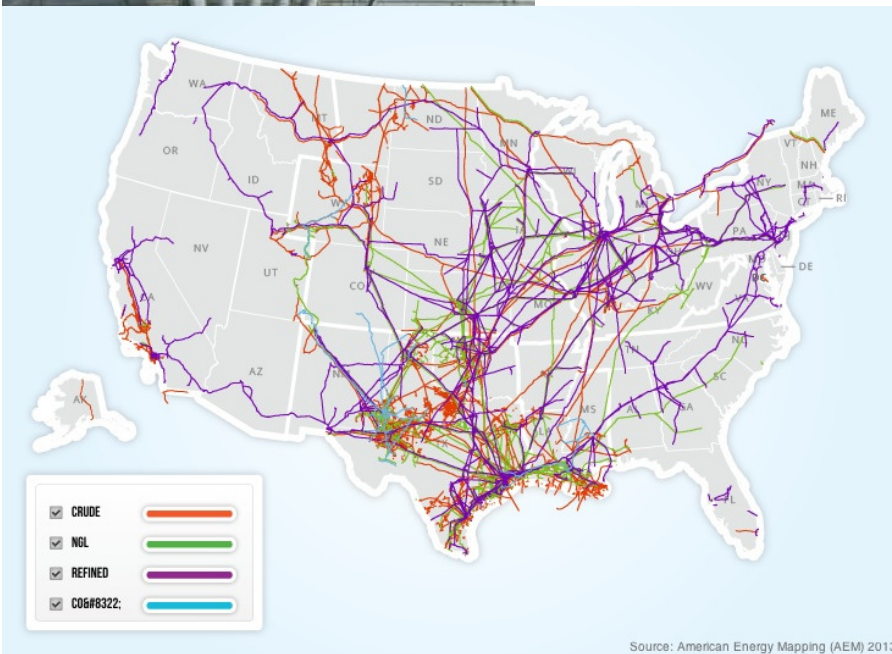
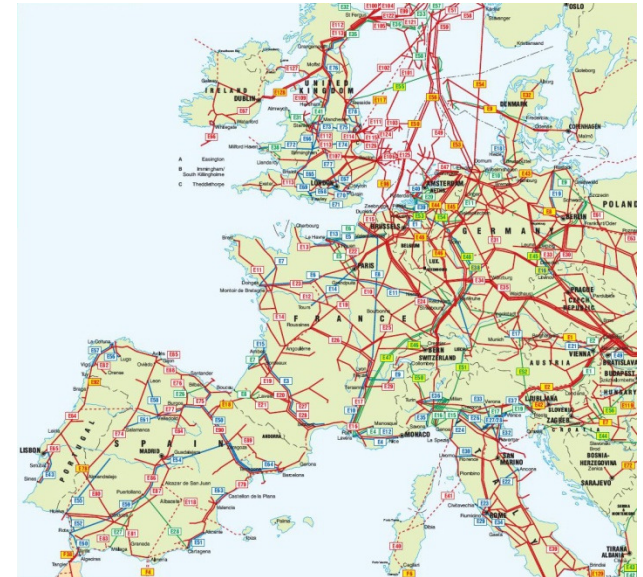


# The Platform





# The NET





# The NET

- ❖ A train - Clusters (a swarm) of designated platforms moving together
- ❖ A net of sensors inside the pipes
- ❖ A net of load / unload terminals
- ❖ A net of recharge / download / comm. stations





# Thank You

Dr. Menashe Rajuan

Email: [menashe@wtr-t.com](mailto:menashe@wtr-t.com)

Mobile: +972 50 910 2244

**INNOVEX2017**

February 8, 2017