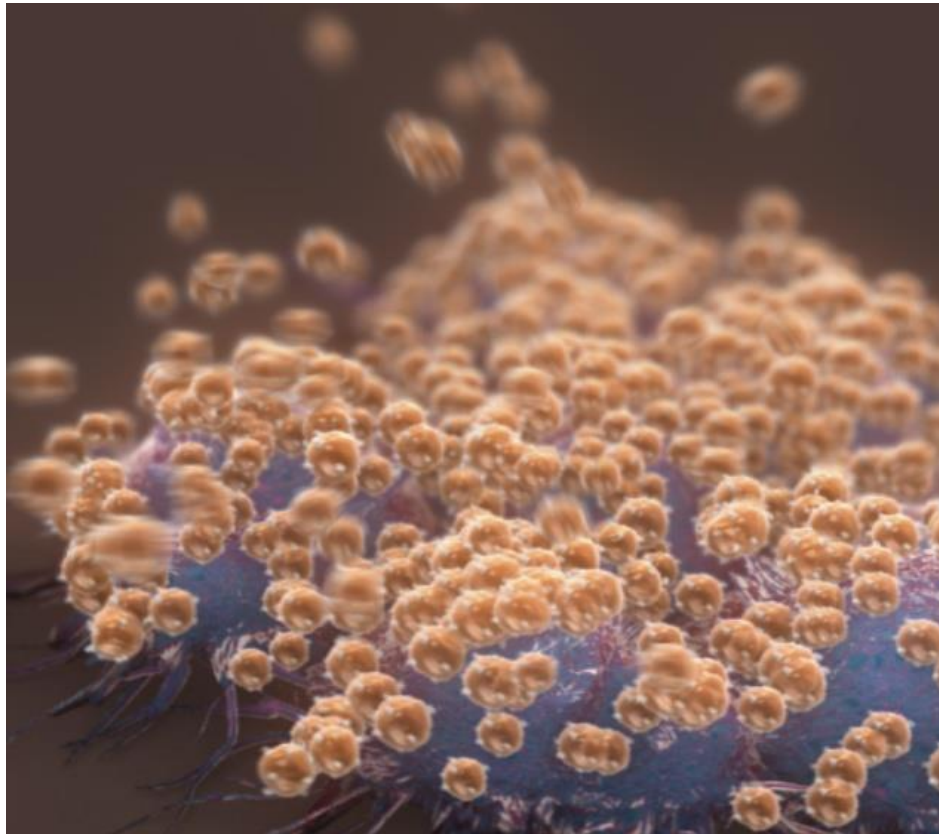
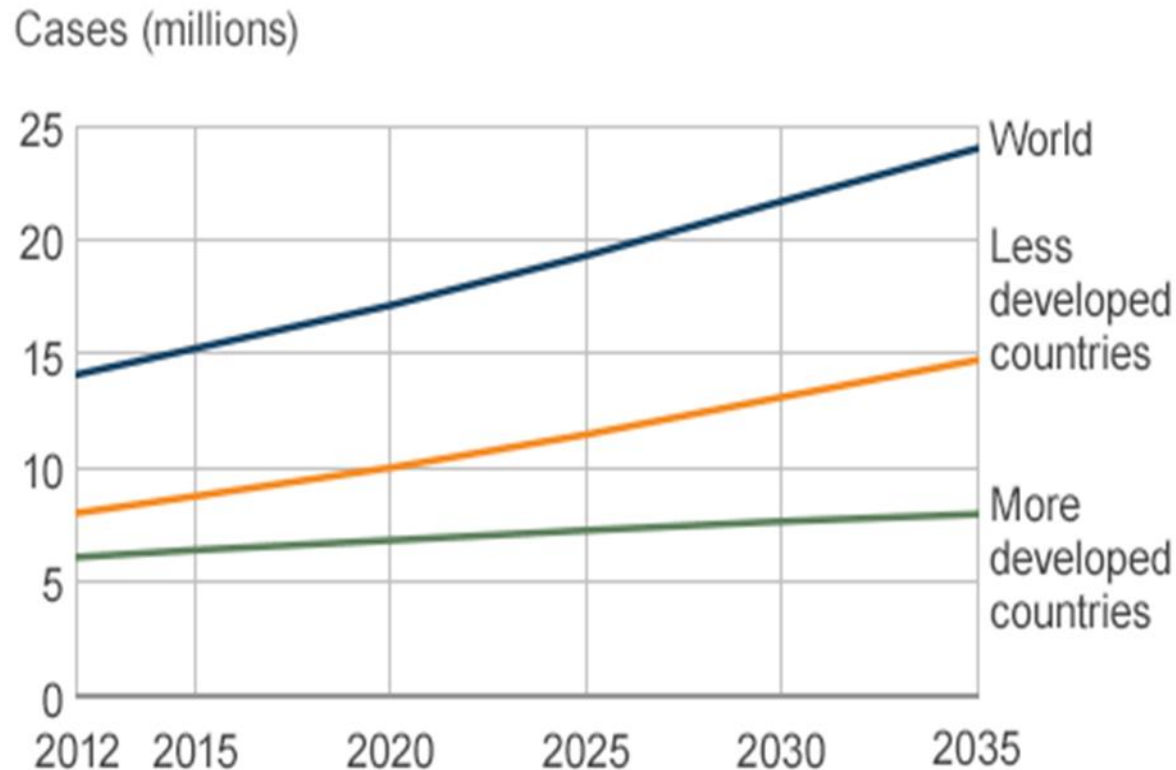


## SaNP "Sarah Nano Particles" turning cancer from terminal to chronic ailment



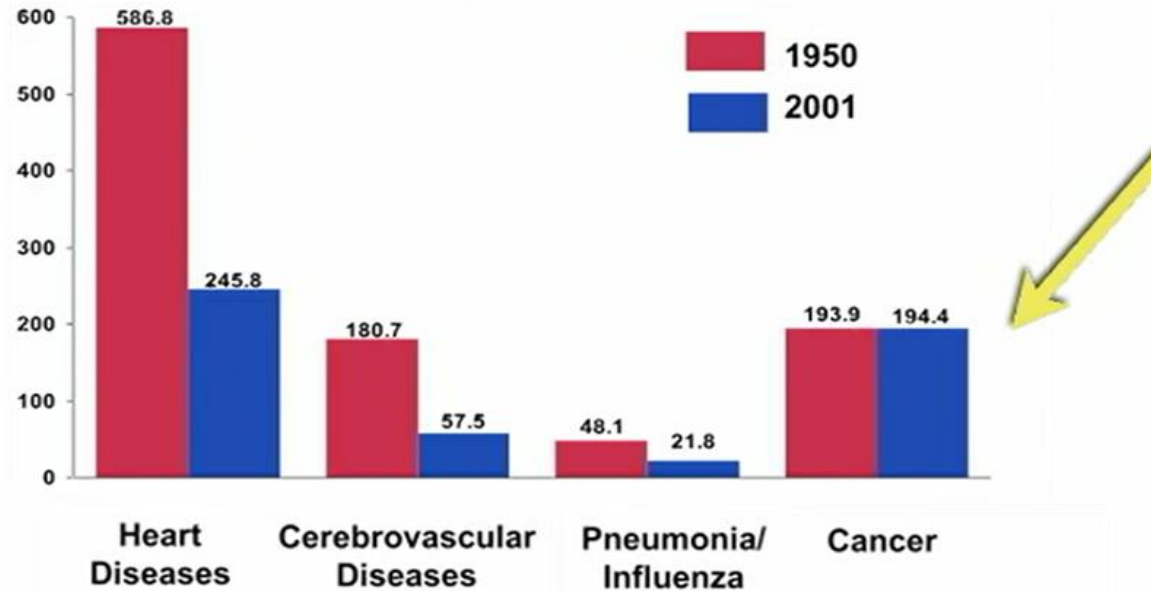
# World Health Organization: "The Coming Cancer Tsunami"



Source: WHO GloboCan

# Change in the US Death Rates\* by Cause, 1950 & 2001

Rate Per 100,000

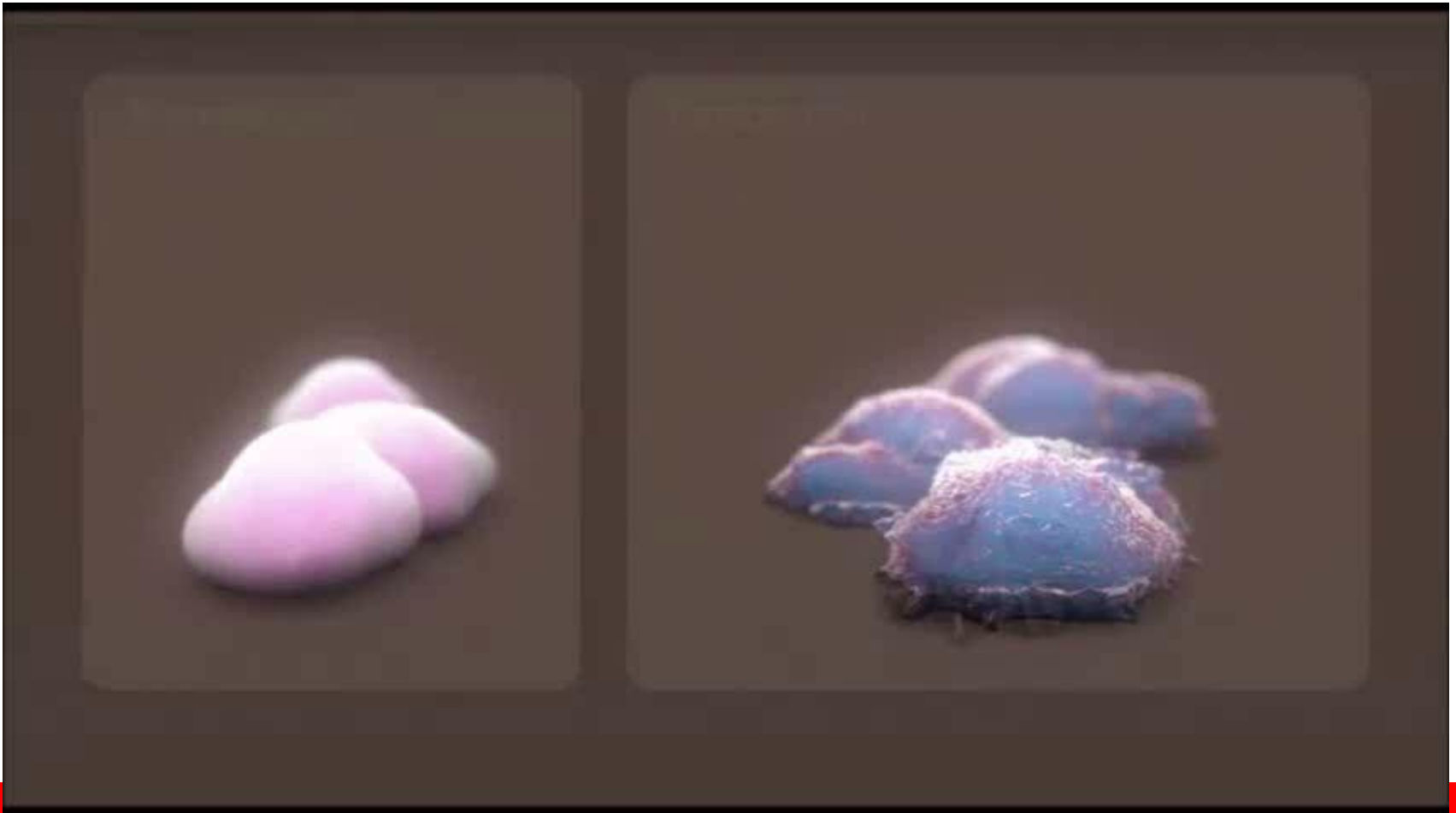


In 2015, about 589,430 Americans are expected to die of cancer, or about 1,620 people per day.

***192 people out of 100,000 American***

***"American cancer society & National health Council"***

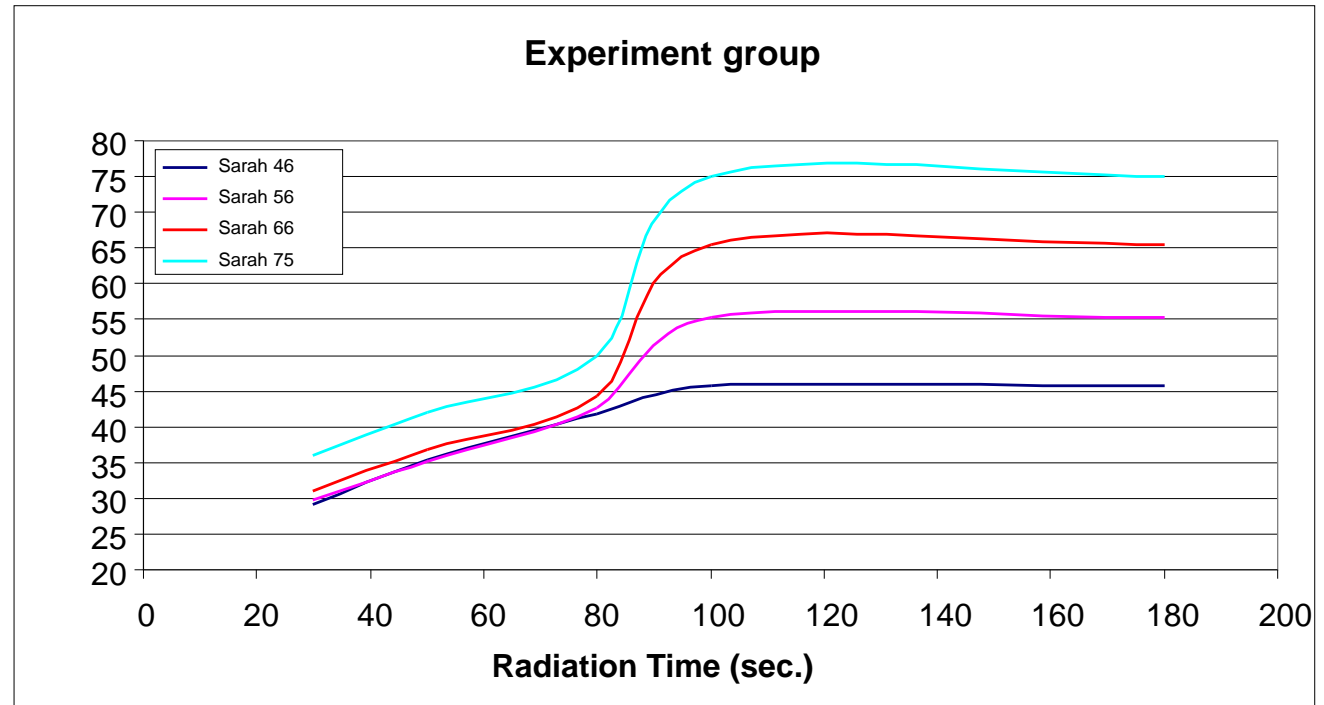
# Warburg affect (use mouse)



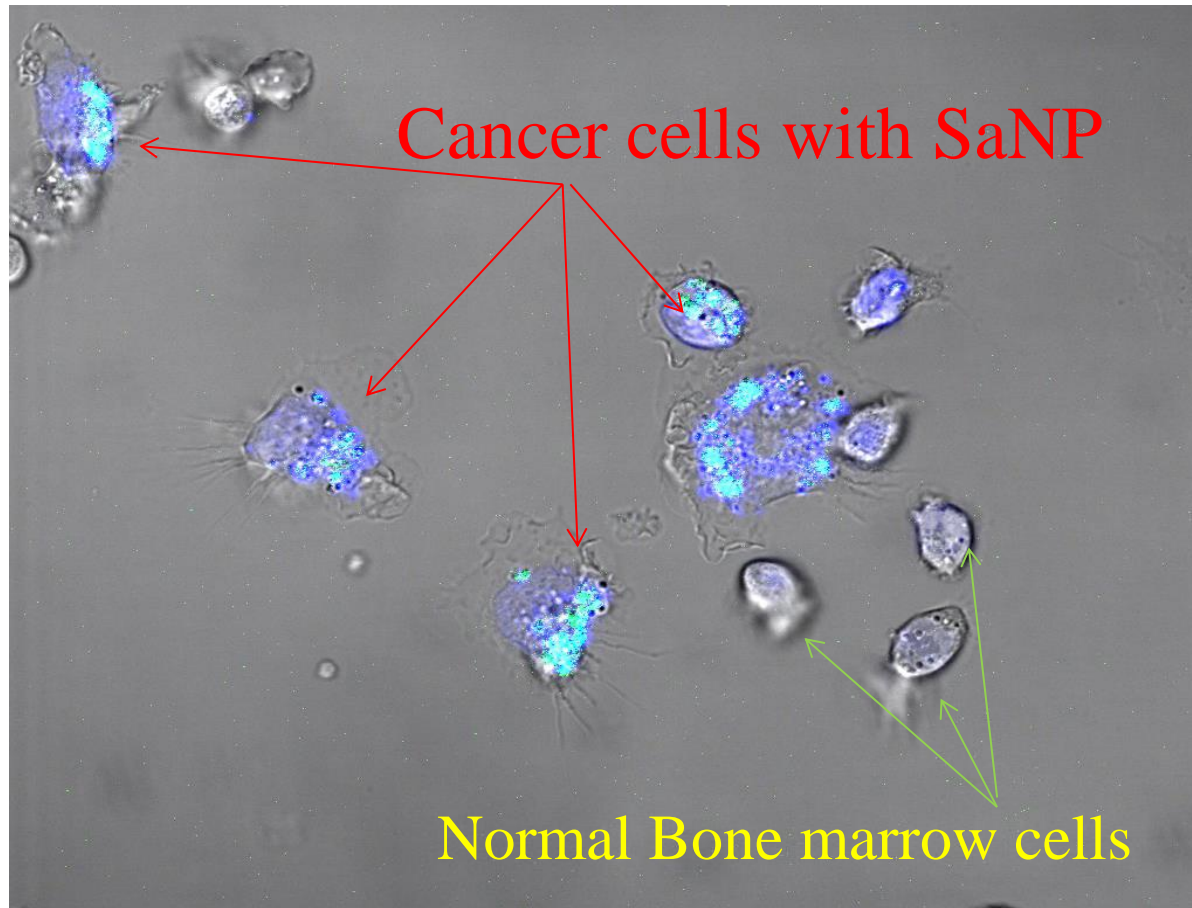
# Managing the temperature

Phase Change Material - Latency heat at various temperature levels:

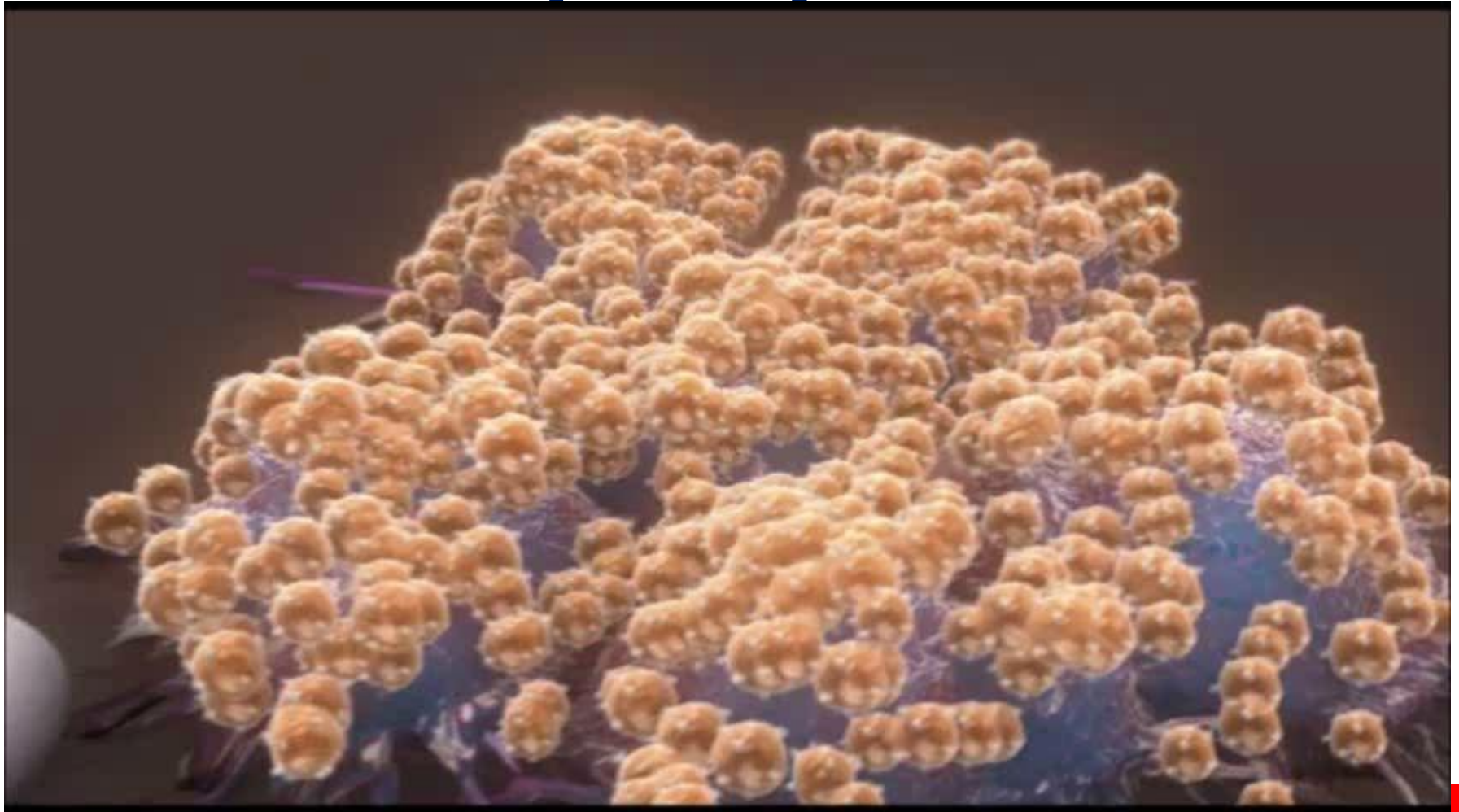
- Sarah 46
- Sarah 56
- Sarah 66
- Sarah 75



# Guiding system “Warburg Affect”

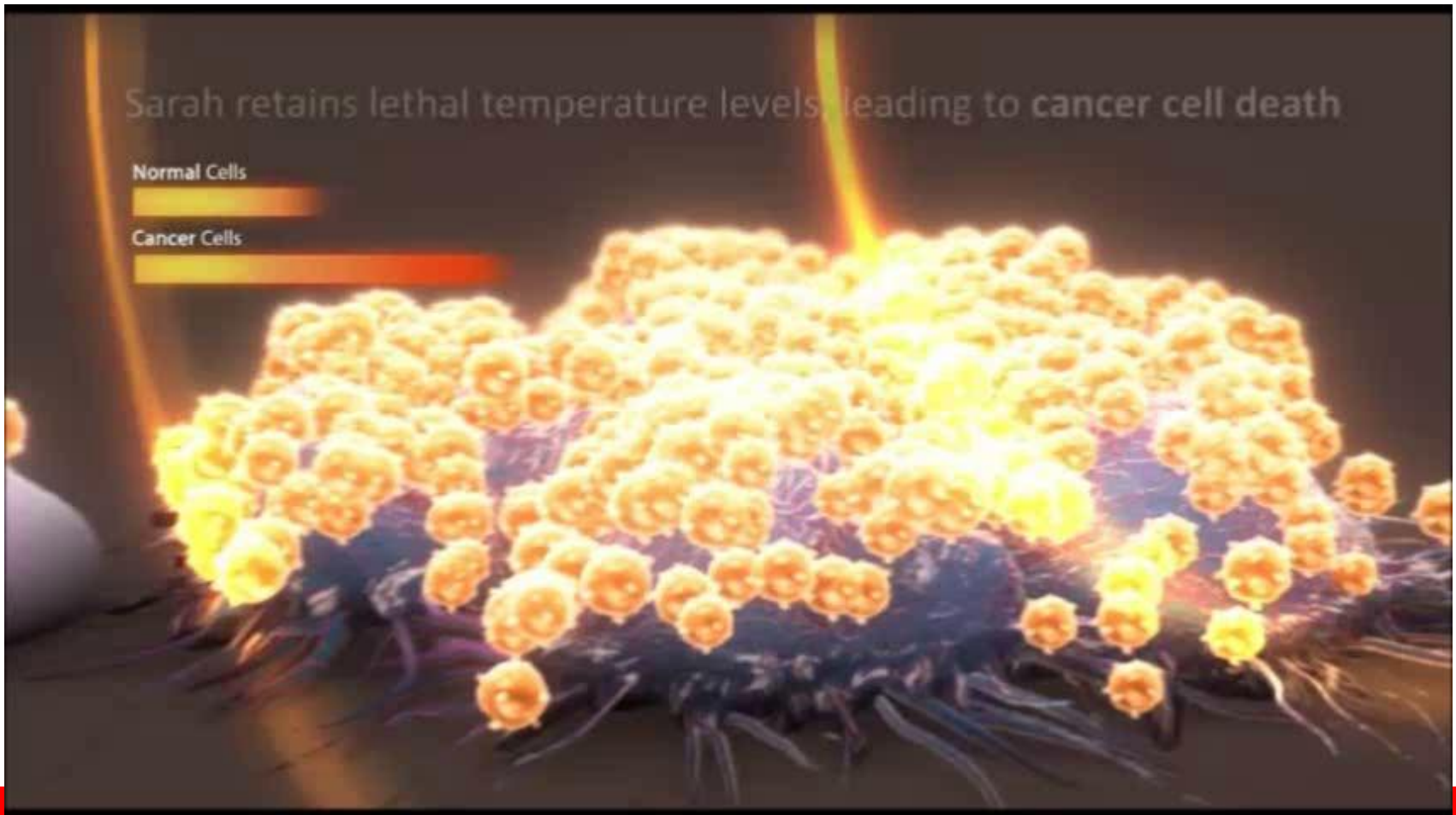


# Heating the SaNP by Radio Frequency (use mouse)



# Killing the cancer cells

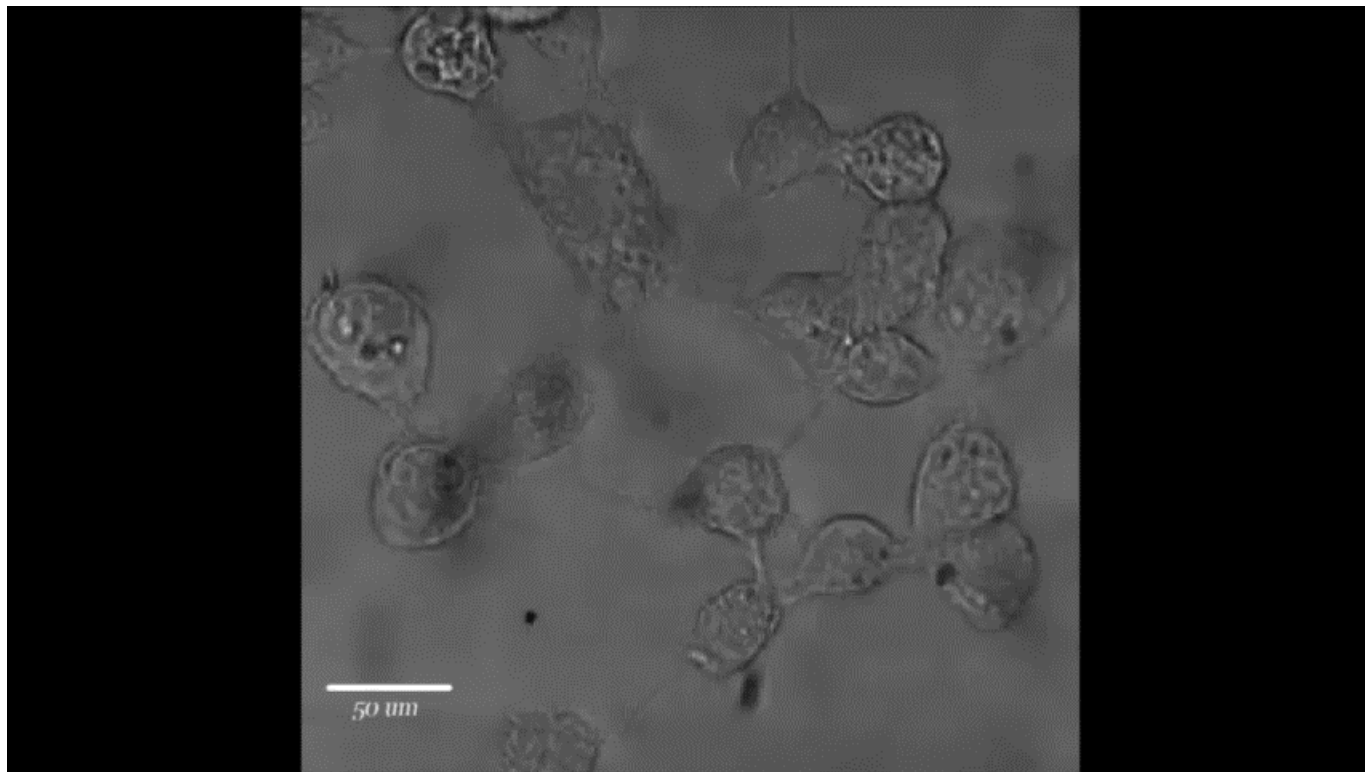
(use mouse)



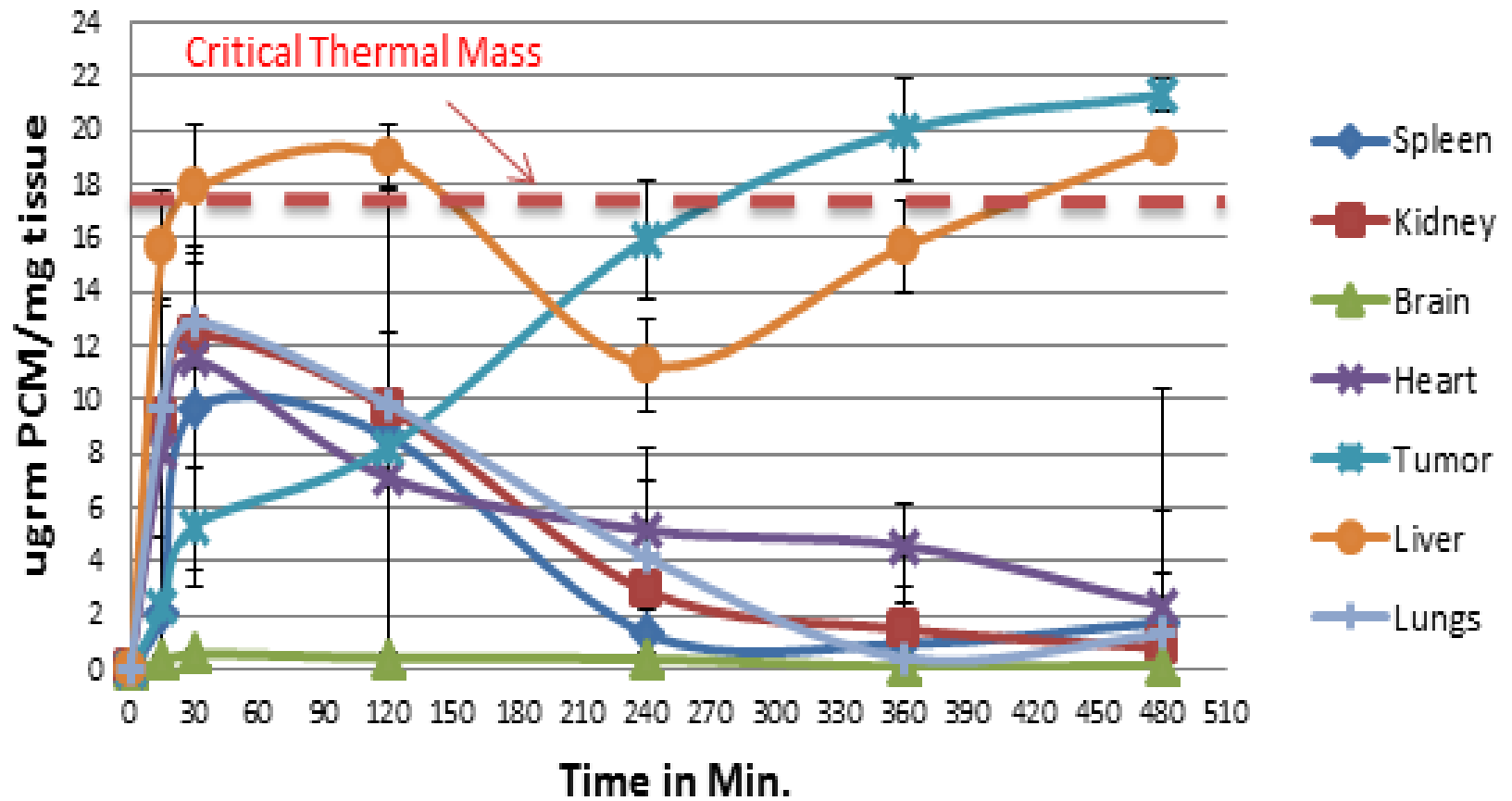


# Killing the cancer cells ONLY

Mix culture-cancer cells and normal cells under RF radiation (use mouse)

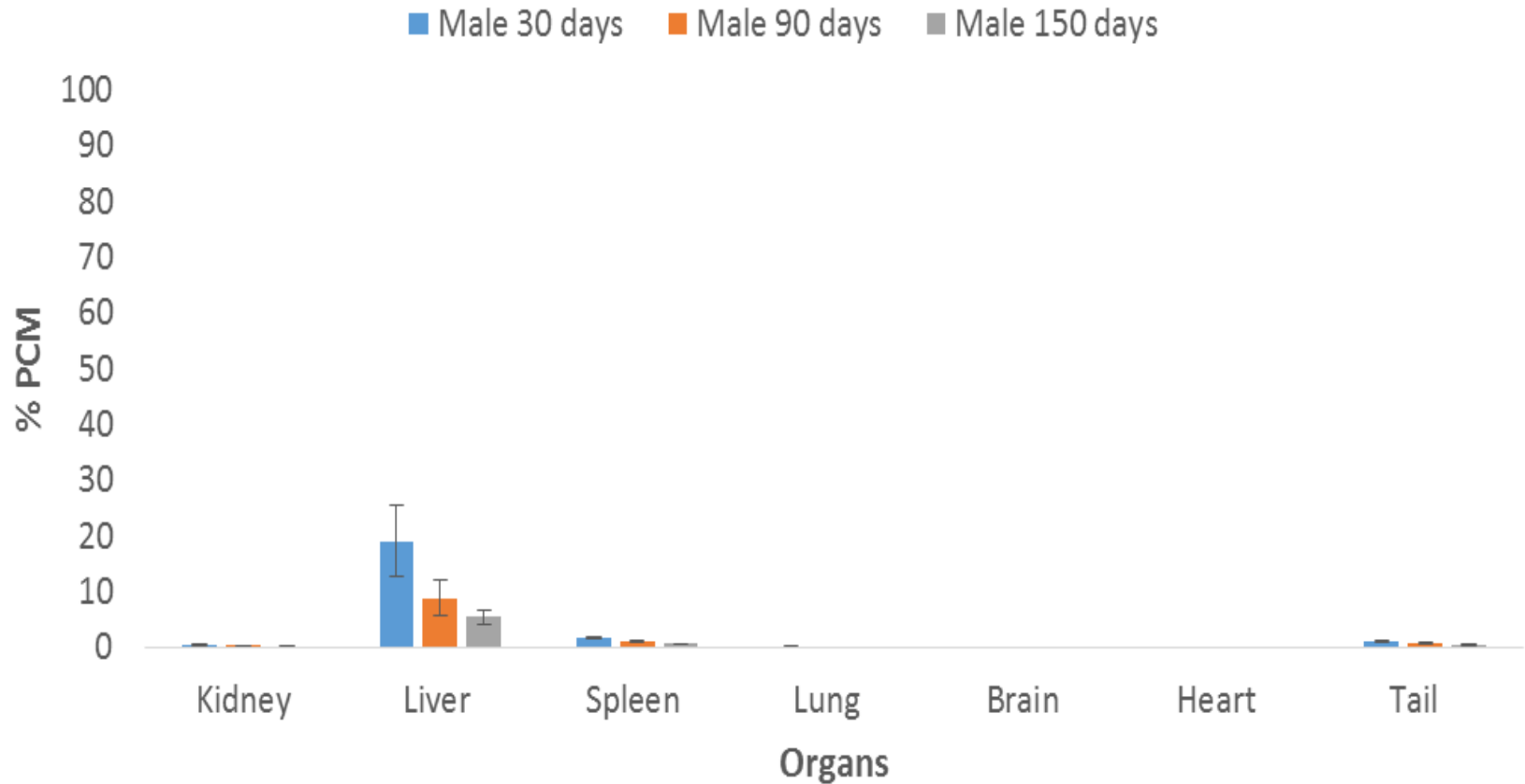


# Accumulation of SaNP in Organs

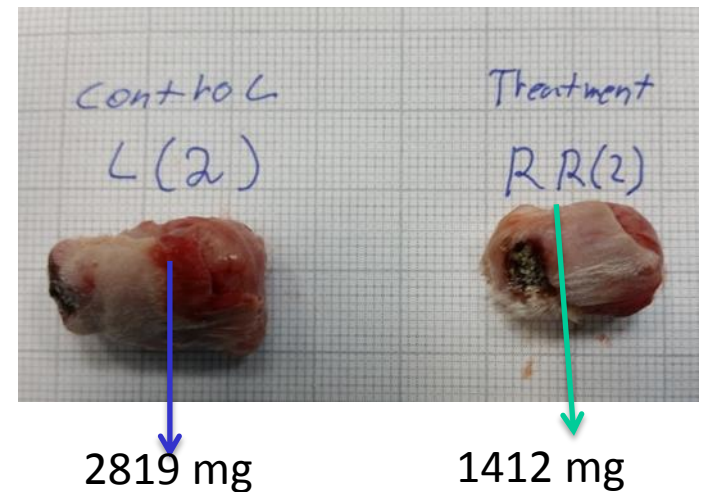
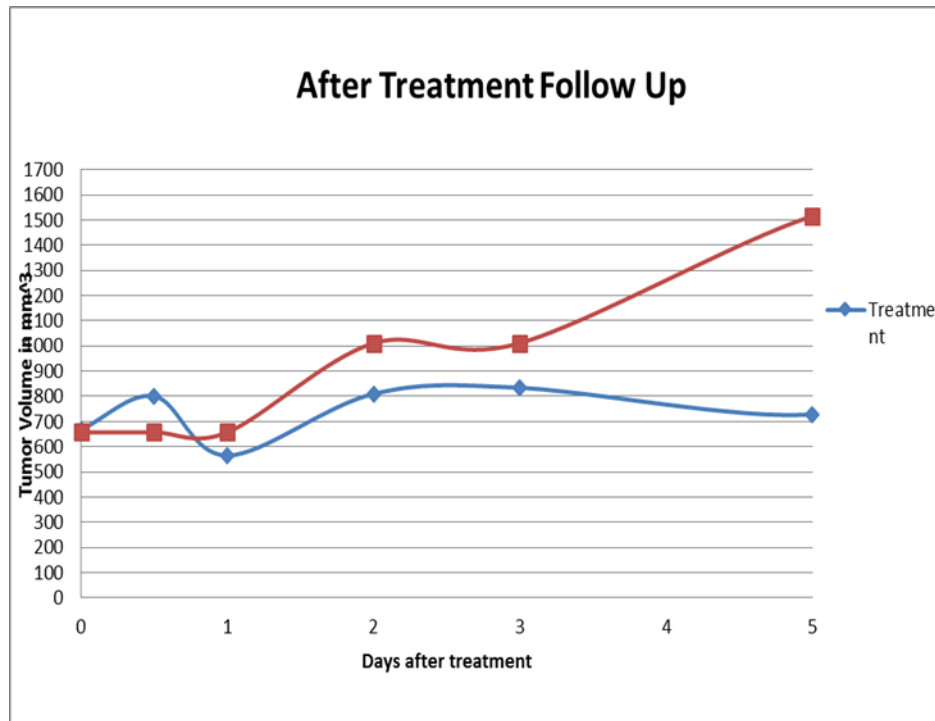


# Long Time Pharmaco Kinetic

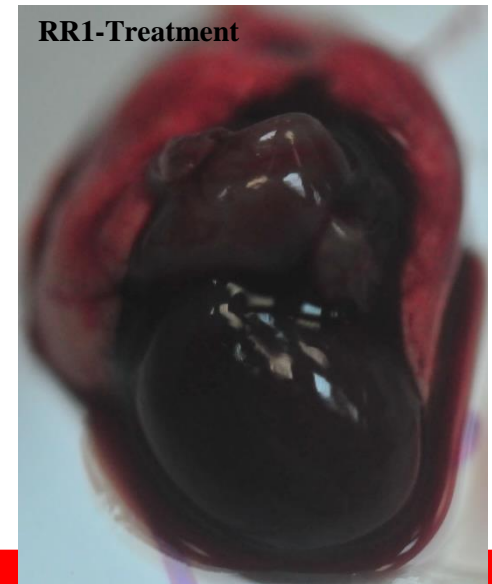
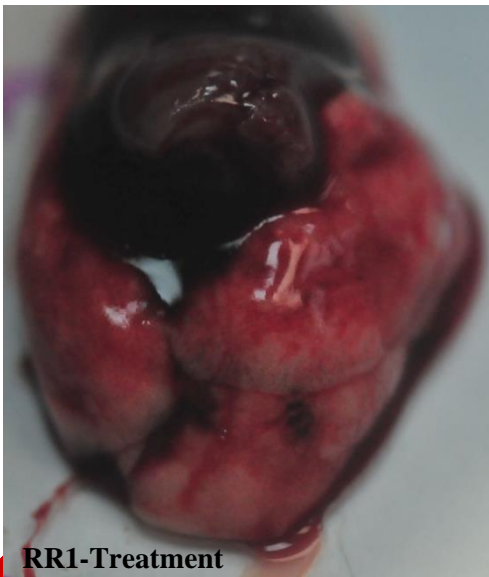
## PCM Content over Time- Male



# Mice, Subcutaneous Tumor – Single Treatment

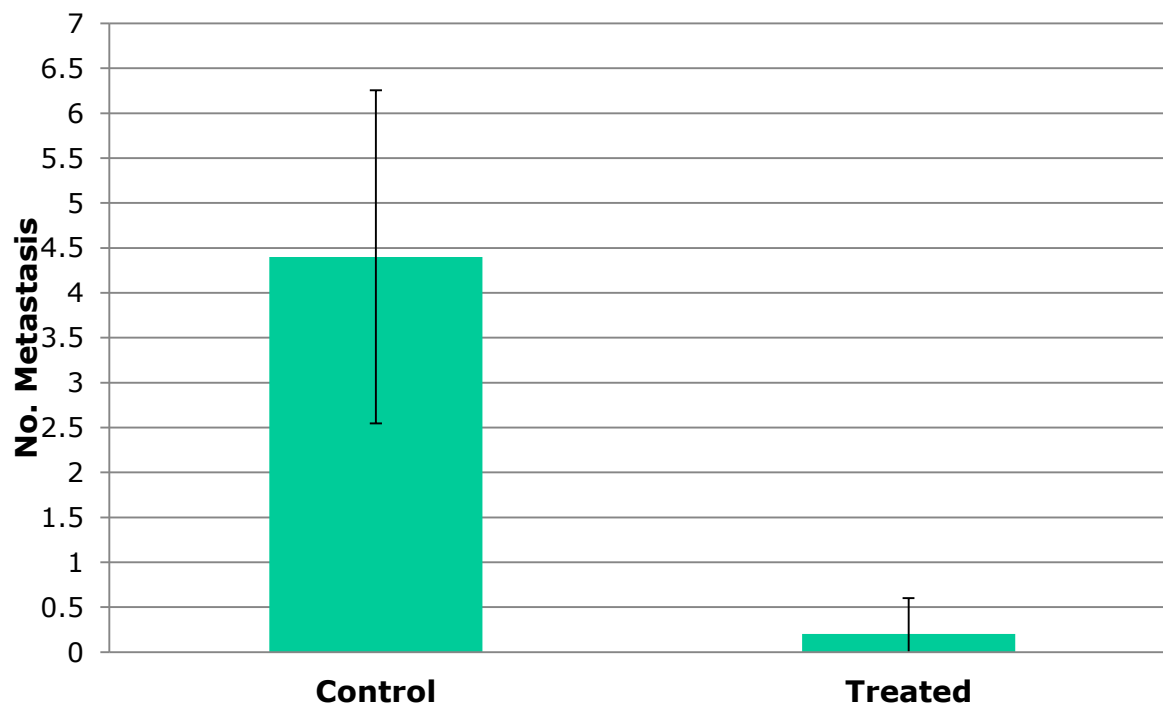


# Spread metastases in mice' Lungs Vs. Treated



# In-Vivo Metastasis Multiple Treatments

**EX-020-008:  
Average Metastasis in Groups**



# Physics & Engineering Vs. Chemistry/Biology

- Dealing with the cancer's Vulnerability and not characteristics
- We are not targeting intrinsic gene mechanisms but rather causing external mechanical damage to the cancer cell
- Results in animals are demonstrated within days and not weeks.
- Re-design or adjustment of the nanoparticle can be accomplished in days, since all the parameters are mechanical.

# SaNP – New Phase (use mouse)

